



THE MONTHLY NEWSLETTER OF GOOD SHEPHERD LUTHERAN CHURCH, ELCA

The Shepherd's Scroll

Preaching, Teaching, and Reaching in Jesus' Name

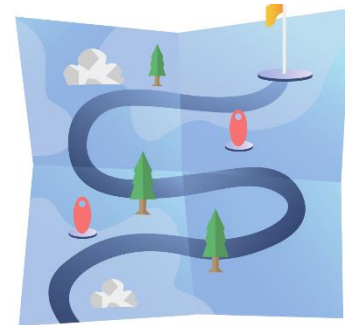
FROM THE PASTOR'S DESK:

Journey

Journey: noun (jour·ney 'jər-nē) plural: journeys

- 1: something suggesting travel or passage from one place to another - *the journey from youth to maturity, a journey through time*
- 2: an act or instance of traveling from one place to another: trip - *a three-day journey, going on a long journey*
- 3: (chiefly dialectal): a day's travel

It's fascinating to me that Merriam-Webster has the first definition of journey as the metaphorical one – the journey from youth to maturity, a journey through time – instead of the literal one – traveling from one place to another. For all that we still travel and commute and road-trip, though, it seems that the image of journey has become broader and deeper. A journey isn't just about getting from point A to point B, it's about what we discover along the way.



Lent is often called a journey: a journey through the wilderness, a journey to the cross. But Lent is more than simply marking time between Ash Wednesday and Easter Sunday, it's about the spiritual reflection and growth along the way.

Good Shepherd has many ways for people to reflect on their relationships with God and deepen their spiritual lives. Retreats and bible studies, Adult Forum and Dwelling Together, Table Talk Pub Theology, even Midweek Lenten services where we pause to discuss and reflect on the Word – all of these provide opportunities for folks to discover and grow.

Our Sunday evening book group offers another possibility for reflection along the journey. However, their book this session deals with the theme of journey in a much more literal way. *Solito: A Memoir* by Javier Zamora tells the story of a nine-year-old boy from El Salvador who is sent to join his parents in the United States. Although he is not technically alone – he is always

part of a larger group of migrants – he is unaccompanied. He has to depend on the kindness of strangers, on the people who choose to love him and care for him despite risk to themselves, and on the greed of the *coyotes* who want their payment at the end of the trip.

Along this harrowing journey, filled with danger and trauma, hunger and desperate thirst, cactus spines and desert sun, bullies and thieves, the fear of arrest and of ICE officers, Javier learns something about himself, his community, and the meaning of family. However, its only after a very different journey – of maturity, therapy, and time – that he finds his voice and begins to tell his stories.



Javier, age 9

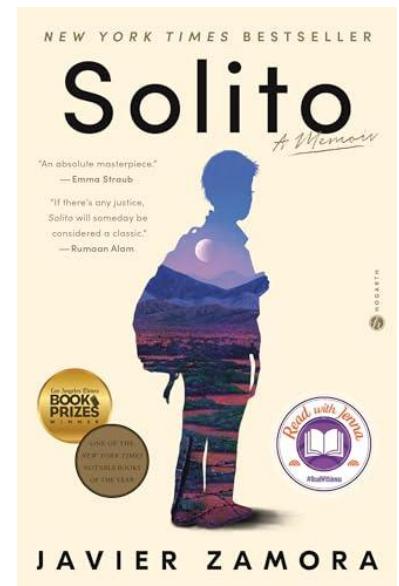
His story of being an unaccompanied child on a journey of nearly two months and 2300 miles, some of it covered more than once and on foot, is both eye-opening and thought-provoking. What risks would I be willing to take to be reunited with my family? To find safety? Would I be willing to temporarily adopt a stranger's child in order to keep them safe?

Who are the exploited and the exploiters in these stories of illegal immigration? What could I as a person, or we as a society, do differently? Do better?

During our journey of Lent, we're asked to repent and reflect, to help folks in need, to pray for the hurting, and to dig into Scripture. This week, this month, dwelling on Javier's *Solito* journey, and the arc of scripture that talks over and over again about wandering and new lands and welcoming strangers, my prayers will include all of the unaccompanied children trying to reconnect, all of the families divided by immigration, and all of the people who care for one another as family even though no blood connects them. Maybe your prayers will include these journeys and journeyers, too. And maybe our prayers will lead us to repentance, to assistance, or just deeper compassion. In any case, it will be a journey for us, too – a journey that can help us deepen our relationship with God and grow in our care for others – a journey that will include new life and Easter hope, given by God for us and for all those who travel wilderness roads whatever they might be.

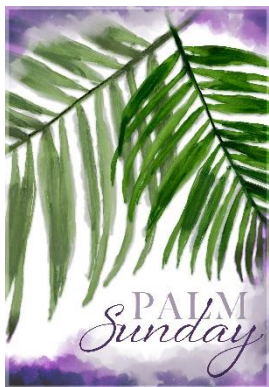
Blessings for your journeys,
Pastor Lynette

The Sunday Evening book group will meet on Sunday, May 4 at Sun Singer Restaurant at 6PM to discuss *Solito: A Memoir*. All are welcome. If you're able, let Pastor Chapman or Amy Chamley know you're planning to attend.



WORSHIP NEWS

Sunday, April 6 – Pastor Chapman’s 25th Ordination Anniversary Celebration
Pastor Amy Zietlow from our Synod Office will be preaching.



**Palm Sunday
Worship Service
Sunday, April 13
9AM**



**Maundy Thursday
Worship Service
Thursday, April 17
7PM**



**Good Friday
Worship Service
Friday, April 18
7PM**



**Easter Sunday
Worship Service
Sunday, April 20
9AM**

MIDWEEK SERVICES DURING LENT

Wednesdays, April 2 & April 9 @ 5:30PM
Soup Supper – sign-up sheet on bulletin board for food items

Wednesdays, April 2 & April 9 @ 6:30PM
Holden Evening Prayer - Remembering the promises of Baptism

During Lent, Bell Choir will rehearse at 6PM; Choir will rehearse immediately following worship (around 7PM).



ADULT FORUM TOPICS

**Sunday, April 27
10:15AM**
What’s Coming in Modern Medicine?

Mark Cohen, M.D., Dean of the Carle Illinois College of Medicine, the world’s first engineering-based school. He will describe efforts to make unique medical advances via this new perspective.

SUNDAY SCHOOL / DWELLING TOGETHER / & ADULT FORUM

Will not meet April 6, April 13 or April 20
Classes will return Sunday, April 27

SMALL GROUPS @ GSLC

DWELLING TOGETHER

**2ND-5TH Sundays
10:15AM**

Sit down for a chat, a conversation about a Bible passage, mutual support and prayer. Meets in the Small Group Room near the Library. Led by Sue Plisch.



GSLC PIECE MAKERS

**Tuesdays
12-3PM**

GSLC Quilt Room



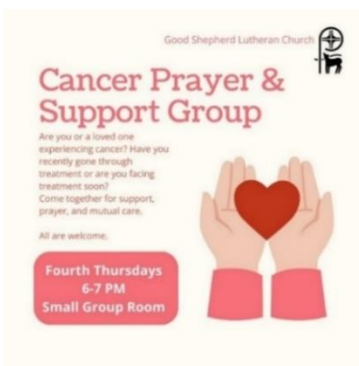
Sewing experience is NOT needed in order to participate. Most of our time is spent sorting, cutting, and ironing fabric. There are jobs for every skill level! All are welcome!

Contact Lois McConomy or Jodi Davis for more info.

CANCER PRAYER & SUPPORT GROUP

**Thursday
April 24
6PM**

**Small Group
Gathering Room**



All are welcome! Feel free to invite anyone who may be battling, recovering from, or has family or friends living with a cancer diagnosis.

FELLOWSHIP EVENTS

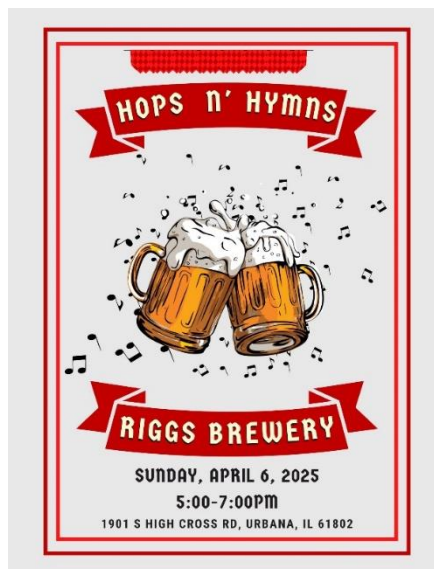
LENTEN SUPPERS

Join us for our Lenten soup suppers **Wednesday, April 2 and Wednesday, April 9 at 5:30pm**, before each midweek Lenten worship service. Please sign up on the bulletin board if you would like to donate soup or bread/rolls for the meals or if you can help with set-up or clean-up.



SUNDAY, APRIL 6 - CELEBRATION BRUNCH

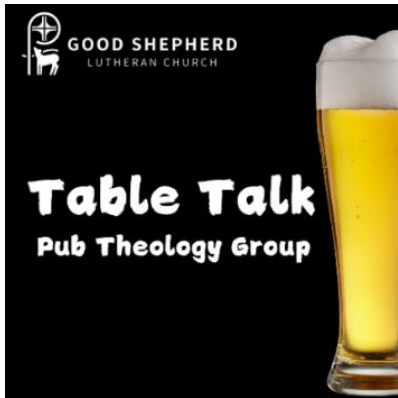
Plan to join us for a brunch celebrating the 25th anniversary of Pastor Lynette's ordination. We'll gather in the Fellowship Hall following worship service.



HOPS N' HYMNS

**Sunday, April 6
5-7PM**

**Riggs Brewery
Urbana**



**TABLE TALK
PUB THEOLOGY
GROUP**

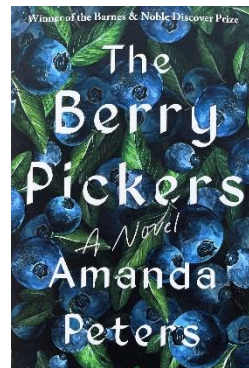
**Date to be
determined**

**6:00PM
Triptych Brewing
Savoy**

Join us at our next Table Talk and engage in meaningful conversations about faith, life, meaning, identity, culture, current events and more. Come with your questions, your curiosity, and pull up a chair. No advance prep or reading is needed but be ready to engage with people of varying backgrounds, perspectives and life experiences.

Friends are welcome! No drinking is required, NA options available.

We will be using conversation prompts from pubtheology.com.



WELCA BOOK CLUB

**Thursday
April 10, 9:30AM
GSLC Choir Room**

***The Berry Pickers*
By Amanda Peters**

This novel is set in 1962 when a family from Nova Scotia came to Maine to pick the berries for the summer. A few weeks later, their youngest daughter Ruthie vanishes. She was last seen by her six year old brother. In Maine, a young girl grows up as the only child of an affluent family. She is troubled by reoccurring dreams and visions that seem more like memories than imagination. She will spend decades trying to uncover a family secret her parents have kept from her. Questions, contact Jan Nuss.

**GSLC BOOK GROUP
Sunday, May 4, 6:00PM
Sun Singer Restaurant, Champaign**

WOMEN'S BIBLE STUDIES



**Groups meet in Choir Room
All women are welcome!**

**Ruth & Rachel Bible Studies:
Tuesday, April 15, 9:30AM**



WELCA LWR PERSONAL CARE KITS COLLECTION

Boxes for collection of the items for the Lutheran World Relief personal care kits will be in the narthex until the WELCA spring luncheon on May 10th, when they will be assembled and packed for shipping later in the year. **Note that the items needed are: two bath sized bars of soap in their packages, one toothbrush in package, one sturdy comb out of package, one nail clipper, and one dark colored bath towel.**

For more information or questions, please contact Nancy Olson.

COMMUNITY OUTREACH

1ST WEDNESDAY OF THE MONTH MEALS FOR ST. ANDREW'S



Meals for our fellow Lutheran students are provided by Good Shepherd Lutheran Church on the 1st Wednesdays of the Month.

No need for expert chefs or experienced bakers! This is an opportunity for anyone!

Help us provide simple meals, usually consisting of something that can be heated in a crockpot (soup, pasta, etc.), salad, bread and dessert for 10-15 students.

No need to coordinate delivery to St. Andrew's! Our responsibility is to have the food items in the kitchen at GSLC on the **1st Tuesday by 3:30 pm.**

Contact Agatha when you've dropped off items in our kitchen, and she will let Pastor Jon at St. Andrew's know that it is ready for pickup.

If you would like to help provide food, you can use Sign Up Genius:

<https://www.signupgenius.com/go/70A0E4EAAAD29A64-52474153-standrews>

OR use this QR Code:



On April 26th, hundreds of runners in the Illinois Marathon will pass directly in front of Good Shepherd! Join us as we support and encourage them by cheering them on and handing out water and nutrients at our hydration station. Volunteers are needed from roughly 8:30am-1pm.

If you would like a t-shirt, please register to volunteer as soon as possible.

https://illinoismarathon.volunteerlocal.com/volunteer/?id=91898&job_name=hydratio
[n%20station%20%](https://illinoismarathon.volunteerlocal.com/volunteer/?id=91898&job_name=hydratio)

Password=Shepherd



YOUTH NEWS



**GOOD SHEPHERD
GOD SQUAD**
7th-12th grades
Saturday, April 12
6-8PM
Snacks, games, and
devotions.

Good Shepherd youth and adult volunteers shopping for our food pantry. GSLC thanks our many volunteers who continue to support the church pantry in all ways.



Easter Egg Hunt
Sunday, April 20
10:30AM
GSLC Front Lawn

EASTER EGG HUNT
Sunday, April 20
10:30AM

If you'd like to donate candy to be put in the eggs, we're needing individually wrapped candy, small enough to fit into plastic easter eggs. We'll have a basket in the Narthex for candy donations.



**GOOD SHEPHERD
YOUTH CLUB**
3rd-6th grades
Saturday, April 26
4-6PM
Snacks, games, and
devotions.



YOUTH CAMPS & RETREATS



CROSSWAYS CONFIRMATION CAMP

Augustana College, Rock Island

June 9-13 for youth currently in grades 6-8 and their congregational adults. Cost is \$350 per person. Registration deadline is May 15. Learn more at CrosswaysCamp.org.



Leadership Lab

LEADERSHIP LAB

Augustana College, Rock Island

June 23-28 for youth currently in high school, young adults, and adults. Cost is \$420 per person. Registration opens soon; deadline is May 15. Learn more at LeadershipLab.net.



Central/Southern Illinois Synod
Evangelical Lutheran Church in America

SYNOD YOUTH RETREAT

Lake Williamson Christian Center in
Carlinville, IL

November 21-23 for youth in grades 6-12 and their congregational adults. Registration opens in September; deadline is October 1. Learn more at CSIS-ELCA.org/youth.



MIGHT YOU HAVE A NEED TO RECEIVE CARE FROM SOMEONE?

This article was written by an RN and a member of the Lutheran Faith Community Nurse Association, to which I belong. I thought this could be good for all of us at some point in our lives. Please read with faith and understanding! Sandy

As a Faith Community Nurse, I have realized that there is often a great resistance to acknowledging a need to receive care. The common statement is, **"I can take care of myself, I'm fine, I don't need any help"**.

We all grew up learning that it is more blessed to give than to receive, but to give, someone must be willing to receive!! It is very hard or impossible to give when there is strong resistance to receiving. I have come to realize **what a gift it is to the giver when care is received with thanks and genuine gratefulness.**

So often in our pride, we feel that being in a position where we need to receive care makes us weak and vulnerable. But we can still have a choice in how we receive that care, gratefully or grudgingly. I like to remind those who are resistant to receiving care or feeling like a burden, to think of the joy they received when they were on the caregiving side.

You can have an opportunity to give that same joy to others as they show gratitude to

those who provide care for them. We will all be in a position of needing to receive help and care from others at some time in our lives. When that help and care is offered and given, may we remember to receive it with grace and gratitude. In this way we are giving a wonderful gift back - the gift of gratitude that means so much to the giver.

The result of this is that both giver and receiver receive the blessing. May God Bless you in your giving and receiving!!

Sandy Reifsteck RN

Faith Community Nurse (Parish Nurse) GSLC

PALLIATIVE CARE (PC) – WHAT IS IT AND CAN I REFER MYSELF OR FAMILY?

PC is to relieve suffering and improve quality of life for patients with advanced illnesses and their families. You **do not have to have a referral** to contact the department at either Christie or Carle.

Why now, when the Goal is to improve Quality of Life aligned with the patient's and family's wishes and goals?

1. Aging, chronically ill population is growing
2. Patients and families are under/unprepared
3. End of life care may be inappropriate with high burden and low benefits

What are the advantages?

1. It is a team approach- doctor, nurse, social worker, chaplain if needed
2. Get help with disease, counseling, and navigating the health care system

3. Most hospitals provide both OSF and Carle.
4. Research studies show pain and systems are better managed. Less depression and better quality of life!
5. All treatments and medications are covered by normal insurance methods
6. Many patients live longer because symptoms and pain are controlled.

What are the concerns or barriers?

1. Confusion with Hospice - which it is not
2. Patients and family are giving up – which they are not!
3. Patients are able to undergo any other care, or life prolonging treatment – such as chemotherapy or radiation

We tend to treat the illness, not what the patient needs or wants, and Care becomes most important when Cure is not possible.

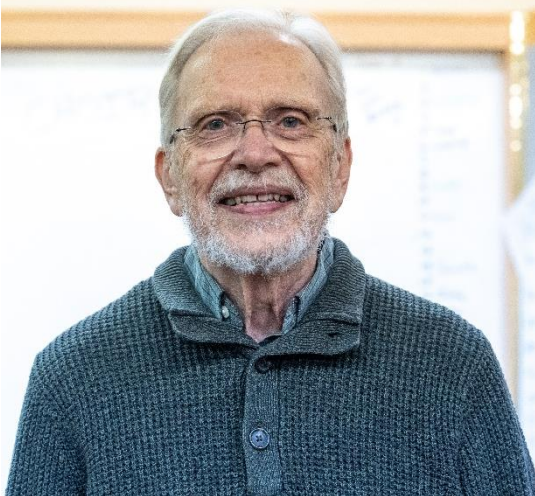
Contact information for an appointment or more information:

OSF/Christie Clinic–Kathleen Collins, MD
217-366-5434

Carle Health-Rebecca Puhler, DO
217-383-3311

Sandy Reifsteck, RN, MS Ed
Faith Community Nurse (Parish Nurse)
for GSLC
217-417-4489

Welcoming New Members



Rev. Roger Digges



Emily, Michael & Olivia Nolte



David, Karen & Sofia Aarestad

APRIL SERVING SCHEDULE

	04/06/2025	04/13/2025	04/17/2025 Maundy Thursday 7PM	04/18/2025 Good Friday 7PM	04/20/2025 Easter	04/27/2025
Acolyte	Donovan Dewing	Jake Brucker	VOLUNTEER NEEDED	Donovan Dewing	Zechariah Fisher	Declan O'Connell
Communion Assistants	Jason Fisher	Susan Hinrichs	Dean Olson		Susan Barreto	Dean Olson
	Cinda Brucker Pastor Amy Zietlow	Ash Waller Carol Steinman	Nancy Olson Mary Szyzka	N/A	Lucas Barreto Rebecca Nef- Heffernan	Nancy Olson Agatha Barnes
Reader	Steve McConomy	Susannah Scaroni	Bob Coverdill	Dean Olson Nancy Olson	Bob Coverdill	Jim Manley
Chancel Care	Tori Corkery	Tori Corkery	Mary Szyzka	N/A	Sally Widholm	Sally Widholm
Food Packing	Patty Hart	Tori Corkery	N/A	N/A	N/A	N/A
Food Delivery	Dean Olson & Bob Clark	Gerald & Rosalyn Roosevelt	N/A	N/A	Doris Snyder & Carol Manley	Bob Clark
Flower Delivery	Laurie Johnson	Carol Steinman	N/A	N/A	Lois McConomy	Patty Hart
Nursery	Jenelle & Dylan Keene	Lisa Young	VOLUNTEER NEEDED	Samantha Fisher	VOLUNTEER NEEDED	Carol Manley & Amy Chamley
Coffee/ Donuts	N/A	Kim McFarland & Samantha Fisher	N/A	N/A	Don Block & Nancy Olson	Don Block & Lisa Young
Live Stream	Darrell Hoemann	Darrell Hoemann	Darrell Hoemann	Darrell Hoemann	Darrell Hoemann	Darrell Hoemann
Usher	Dan Corkery	Nancy McCowen	Samantha Fisher	Sue Plisch	Don Block	Patty Hart

If you are interested in serving as a volunteer on Sunday mornings, please contact Traci in the church office at staff@gslc-cu.org to be added to our volunteer list.



Pastor	Lynette Chapman
Parish Admin. Asst.	Traci Shepherd
Treasurer	Bob Clark
Keyboardist	Leon Harrell
Choir Director	Julia Hartman
Custodian	Dennis Lage
Bookkeeper	Dana VanDeveer Jones
Parish Nurses	Sandy Reifsteck Elizabeth Kakoma Celeste Coverdill

OFFICE HOURS:
Monday – Thursday
8:00AM – 3:00PM
&
Friday 8:00AM-Noon

Deadline for Scroll is the 15th of every month.

***Bulletin / Announcement / Shout Out Deadline is Wednesday at noon
each week.***

***If you would like to receive a printed copy of the Scroll, please contact Traci at staff@gslc-cu.org.
Paper copies are also available at the church.***